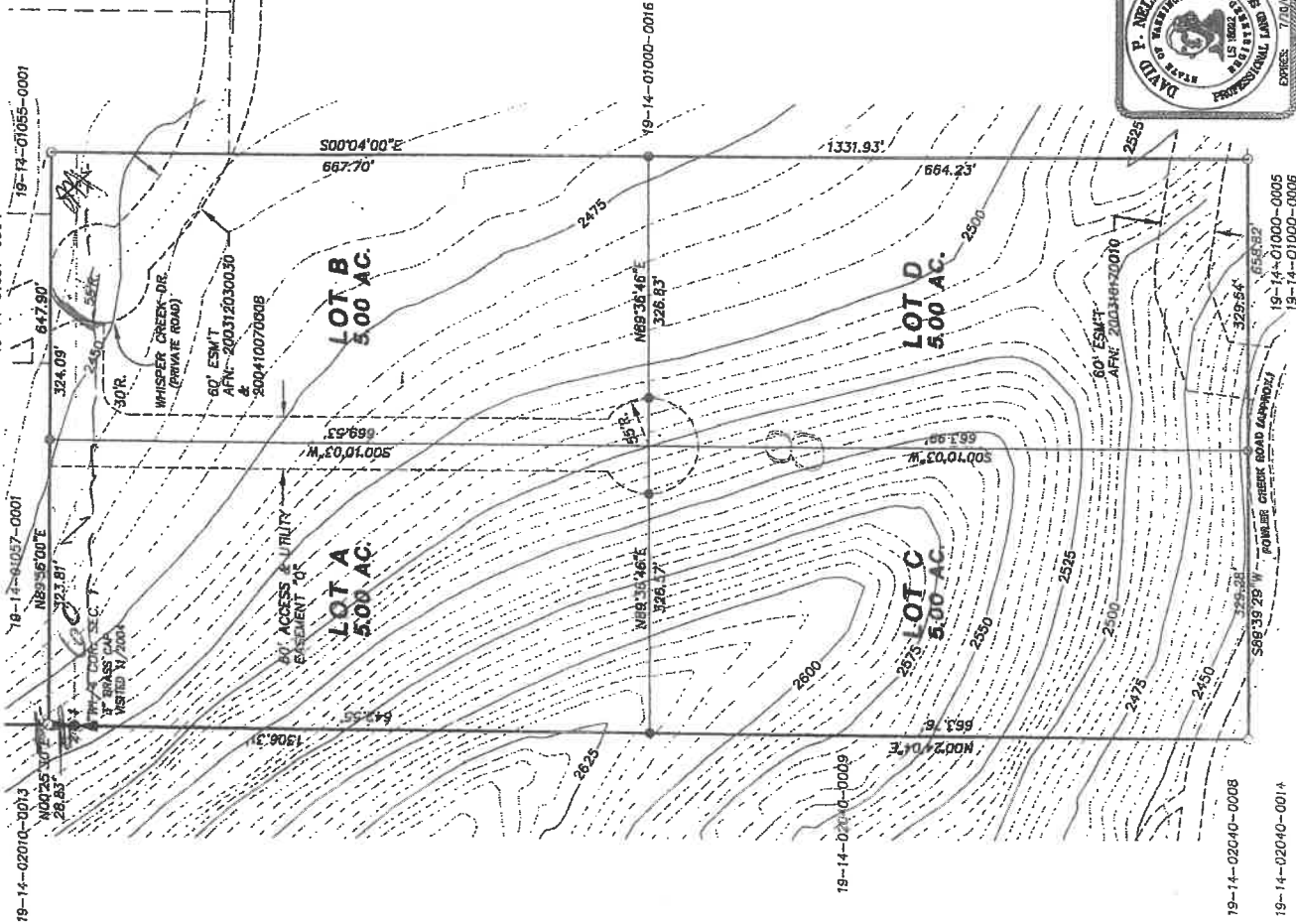


**CLEAR VIEW ACRES SHORT PLAT
KITITAS COUNTY SHORT PLAT NO. 06-XX
PTN. OF THE WEST 1/2 OF SEC. 1, T.19N., R.14E., W.M.
KITITAS COUNTY, WASHINGTON**

SURVEY NOTES:

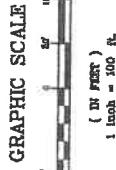
1. BASIS OF BEARINGS AND SECTION BREAKDOWN ARE PER SURVEYS BY BLUMH & ASSOCIATES, INC. AS FILED IN BOOK 20 OF SURVEYS AT PAGE 172, UNDER AUDITOR'S FILE NUMBER 200312030030.
2. THE PURPOSE OF THIS DOCUMENT IS TO SHORT PLAT LOT 8 OF THAT CERTAIN SURVEY AS RECORDED BY BLUMH & ASSOCIATES, INC. IN BOOK 20 OF SURVEYS AT PAGES 172, UNDER AUDITOR'S FILE NUMBER 200312030030.
3. KITITAS COUNTY RELIES ON ITS RECORDS THAT A SUPPLY OF POTABLE WATER EXISTS. THE APPROVAL OF THIS DIVISION OF SURVEYS IS NOT A GUARANTEE OF PERFORMANCE THAT THERE IS A LEGAL RIGHT TO WITHDRAW GROUNDWATER WITHIN THE LAND DIVISION.

19-14-01055-0002

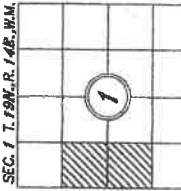


LEGEND

- ! ! ! QUARTER CORNER
- SET 1/2" REBAR LSH#0092
- PND REBAR



INDEX LOCATION:
SEC. 1, T. 19N., R. 14E., W.M.



RECORDER'S CERTIFICATE

Filed for record this _____ day of _____, 20____, at _____ M.
in book _____ of _____ at page _____ at the request of
DAVID P. NELSON
Surveyor's Name

County Auditor _____ Deputy County Auditor

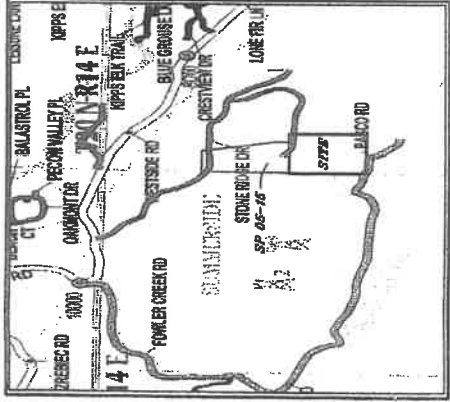
SURVEYOR'S CERTIFICATE

This map correctly represents a survey made by me or under my direction in conformance with the requirements of the Surveying Act of the state of WASHINGTON, WASH. REV. STAT. SEC. 20A.02.010, 20A.02.020, 20A.02.030, 20A.02.040, 20A.02.050, 20A.02.060, 20A.02.070, 20A.02.080, 20A.02.090, 20A.02.100, 20A.02.110, 20A.02.120, 20A.02.130, 20A.02.140, 20A.02.150, 20A.02.160, 20A.02.170, 20A.02.180, 20A.02.190, 20A.02.200, 20A.02.210, 20A.02.220, 20A.02.230, 20A.02.240, 20A.02.250, 20A.02.260, 20A.02.270, 20A.02.280, 20A.02.290, 20A.02.300, 20A.02.310, 20A.02.320, 20A.02.330, 20A.02.340, 20A.02.350, 20A.02.360, 20A.02.370, 20A.02.380, 20A.02.390, 20A.02.400, 20A.02.410, 20A.02.420, 20A.02.430, 20A.02.440, 20A.02.450, 20A.02.460, 20A.02.470, 20A.02.480, 20A.02.490, 20A.02.500, 20A.02.510, 20A.02.520, 20A.02.530, 20A.02.540, 20A.02.550, 20A.02.560, 20A.02.570, 20A.02.580, 20A.02.590, 20A.02.600, 20A.02.610, 20A.02.620, 20A.02.630, 20A.02.640, 20A.02.650, 20A.02.660, 20A.02.670, 20A.02.680, 20A.02.690, 20A.02.700, 20A.02.710, 20A.02.720, 20A.02.730, 20A.02.740, 20A.02.750, 20A.02.760, 20A.02.770, 20A.02.780, 20A.02.790, 20A.02.800, 20A.02.810, 20A.02.820, 20A.02.830, 20A.02.840, 20A.02.850, 20A.02.860, 20A.02.870, 20A.02.880, 20A.02.890, 20A.02.900, 20A.02.910, 20A.02.920, 20A.02.930, 20A.02.940, 20A.02.950, 20A.02.960, 20A.02.970, 20A.02.980, 20A.02.990, 20A.02.1000.

DAVID P. NELSON
Certificator No. 18092

K.C.S.P. NO. 06-XX
Pt. of the W1/2 of Sec. 1, T.19N., R.14E., W.M.
Kittitas County, Washington

OWN BY	DATE	JOB NO.
G. WEISER	08/06	06187
CHKD BY	SCALE	SHEET
D. NELSON	1"=100'	1 OF 2



VICINITY MAP
N.T.S.

APPROVALS

KITITAS COUNTY PUBLIC WORKS

EXAMINED AND APPROVED THIS _____ day of _____, A.D., 20____

Public Works Director

COUNTY PLANNING DIRECTOR

I hereby certify that the "CLEAR VIEW ACRES" Short Plat has been examined by me and find that it conforms to the comprehensive plan of the Kittitas County Planning Commission.

Dated this _____ day of _____, A.D., 20____

Kittitas County Planning Director

KITITAS COUNTY HEALTH DEPARTMENT

Preliminary inspection indicated no conditions exist which would require the applicant to take any special measures or to take any special measures to protect the health of the community. The applicant is advised that the health department will be conducting a final inspection of the site prior to the issuance of a permit to occupy the site. Proprietary purchasers of lots are urged to make inquiries of the County Health Department about issuance of a permit to occupy the lot.

Dated this _____ day of _____, A.D., 20____

Kittitas County Health Officer

CERTIFICATE OF COUNTY TREASURER

I hereby certify that the taxes and assessments are paid for the preceding year and for this year in which this plat is now to be filed.

Dated this _____ day of _____, A.D., 20____

Kittitas County Treasurer

ORIGINAL TAX LOT NO. 19-14-02040-0014

19-14-02040-0008
19-14-02040-0014
19-14-01000-0005
19-14-01000-0006